



Acople Cara Plana Serie A-NPT

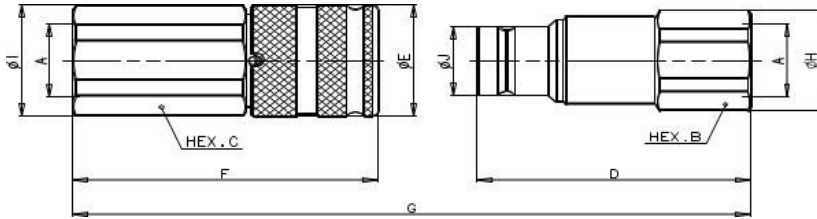
| Description | Size | ISO Size | Rated Flow | | Max. flow suggested | | Connect force | | Disconnect force | | Spillage* |
|-------------|-------|----------|------------|-------|---------------------|--------|---------------|-------|------------------|-------|-----------|
| | | | l/min | GPM | l/min | GPM | N | lbf | N | lbf | |
| | Inch | mm | | | | | | | | | ml |
| A4 | 1/8 | - | 3 | 0,80 | 6 | 1,59 | 120 | 27,00 | 25 | 5,63 | 0,001 |
| A7 | 1/4 | 6,3 | 12 | 3,18 | 24 | 6,36 | 150 | 33,75 | 45 | 10,13 | 0,006 |
| A9 | 3/8 | 10,0 | 23 | 6,10 | 46 | 12,19 | 170 | 38,25 | 40 | 9,00 | 0,012 |
| A13 | 1/2 | 12,5 | 45 | 11,93 | 90 | 23,85 | 190 | 42,75 | 50 | 11,25 | 0,020 |
| A15 | 5/8 | 16,0 | 74 | 19,61 | 148 | 39,22 | 190 | 42,75 | 55 | 12,38 | 0,026 |
| A17 | 3/4 | 19,0 | 100 | 26,50 | 200 | 53,00 | 220 | 49,50 | 70 | 15,75 | 0,032 |
| A21 | 1 | 25,0 | 189 | 50,09 | 378 | 100,17 | 250 | 56,25 | 75 | 16,88 | 0,035 |
| A25 | 1-1/4 | - | 225 | 59,63 | 450 | 119,25 | 350 | 78,75 | 90 | 20,25 | 0,170 |
| A30 | 1-1/2 | - | 288 | 76,32 | 750 | 198,75 | 390 | 87,75 | 70 | 15,75 | 0,050 |

| Description | Max. operating pressure | | | | | | Burst pressure | | | | | |
|-------------|-------------------------|------|------|------|--------|------|----------------|-------|------|-------|--------|-------|
| | Coupled | | Male | | Female | | Coupled | | Male | | Female | |
| | MPa | psi | MPa | psi | MPa | psi | MPa | psi | MPa | psi | MPa | psi |
| A4 | 42 | 6090 | 42 | 6090 | 42 | 6090 | 126 | 18270 | 126 | 18270 | 126 | 18270 |
| A7 | 42 | 6090 | 42 | 6090 | 42 | 6090 | 126 | 18270 | 126 | 18270 | 126 | 18270 |
| A9 | 35 | 5075 | 35 | 5075 | 35 | 5075 | 100 | 14500 | 100 | 14500 | 100 | 14500 |
| A13 | 33 | 4785 | 33 | 4785 | 33 | 4785 | 100 | 14500 | 100 | 14500 | 100 | 14500 |
| A15 | 33 | 4785 | 33 | 4785 | 33 | 4785 | 100 | 14500 | 100 | 14500 | 100 | 14500 |
| A17 | 33 | 4785 | 33 | 4785 | 33 | 4785 | 100 | 14500 | 100 | 14500 | 100 | 14500 |
| A21 | 30 | 4350 | 30 | 4350 | 30 | 4350 | 80 | 11600 | 80 | 11600 | 80 | 11600 |
| A25 | 30 | 4350 | 30 | 4350 | 30 | 4350 | 80 | 11600 | 80 | 11600 | 80 | 11600 |
| A30 | 27 | 3915 | 27 | 3915 | 27 | 3915 | 80 | 11600 | 80 | 11600 | 70 | 10150 |

La información recogida en esta ficha (Catálogo) es de carácter orientativo y puede ser modificada o no sin previo aviso. UTECSA no se hace responsable de una correcta utilización del producto, salvo las referentes a defectos de fabricación.



Acople Cara Plana Serie A-NPT

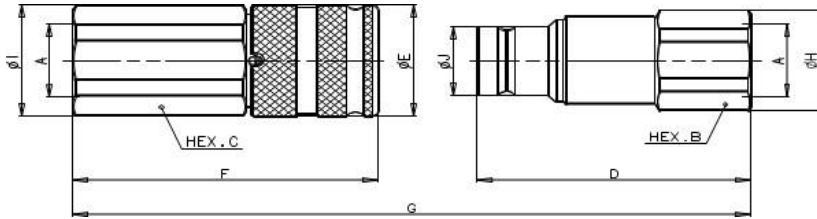


| CODIGO | DESCRIPCION | A | Unit | B | C | D | E | F | G | H | I | J | Unit | Weight | |
|--------------|---|-----|------|------|------|------|------|------|-------|------|------|------|------|--------|--------|
| | | | | | | | | | | | | | | Male | Female |
| STUCP05N041H | A7 1/4"NPT-Hembra 12l/min 6090psi A.R.Cara Pl. | 1/4 | mm | 22 | 27 | 47,9 | 28 | 53,1 | 90,2 | 23,8 | 29 | 16,1 | Kg | 0,088 | 0,187 |
| STUCP05N041M | A7 1/4"NPT-Macho 12l/min 6090psi A.R.Cara Pl. | | Inch | 0,87 | 1,06 | 1,89 | 1,10 | 2,09 | 3,55 | 0,94 | 1,14 | 0,63 | lb | 0,19 | 0,41 |
| STUCP05N061H | A9 3/8"NPT-Hembra 23 l/min 5075psi A.R.Cara Pl. | 3/8 | mm | 27 | 30 | 60 | 32 | 64,8 | 108,8 | 29 | 32 | 19,7 | Kg | 0,150 | 0,273 |
| STUCP05N061M | A9 3/8"NPT-Macho 23 l/min 5075 psi A.R.Cara Pl. | | Inch | 1,06 | 1,18 | 2,36 | 1,26 | 2,55 | 4,28 | 1,14 | 1,26 | 0,78 | lb | 0,33 | 0,60 |
| STUCP05N081H | A9 1/2"NPT-Hembra 23 l/min 5075psi A.R.Cara Pl. | 1/2 | mm | 27 | 30 | 62,5 | 32 | 69,8 | 116,3 | 29 | 32 | 19,7 | Kg | 0,138 | 0,278 |
| STUCP05N081M | A9 1/2"NPT-Macho 23l/min 5075psi A.R.Cara Pl. | | Inch | 1,06 | 1,18 | 2,46 | 1,26 | 2,75 | 4,58 | 1,14 | 1,26 | 0,78 | lb | 0,30 | 0,61 |
| STUCP05N082H | A13 1/2"NPT-Hembra 45 l/min 4785psi A.R.Cara Pl. | 1/2 | mm | 36 | 36 | 68 | 38 | 76,8 | 127,5 | 40 | 40 | 24,5 | Kg | 0,295 | 0,452 |
| STUCP05N082M | A13 1/2"NPT-Macho 45 l/min 4785psi A.R.Cara Pl. | | Inch | 1,42 | 1,42 | 2,68 | 1,50 | 3,02 | 5,02 | 1,57 | 1,57 | 0,96 | lb | 0,65 | 1,00 |
| STUCP05N121H | A13 3/4"NPT-Hembra 45 l/min 4785psi A.R.Cara Pl. | 3/4 | mm | 36 | 36 | 70,5 | 38 | 83,8 | 137 | 40 | 40 | 24,5 | Kg | 0,273 | 0,469 |
| STUCP05N121M | A13 3/4"NPT-Macho 45 l/min 4785psi A.R.Cara Pl. | | Inch | 1,42 | 1,42 | 2,78 | 1,50 | 3,30 | 5,39 | 1,57 | 1,57 | 0,96 | lb | 0,60 | 1,03 |

La información recogida en esta ficha (Catálogo) es de carácter orientativo y puede ser modificada o no sin previo aviso. UTECSA no se hace responsable de una correcta utilización del producto, salvo las referentes a defectos de fabricación.



Acople Cara Plana Serie A-NPT



| CODIGO | DESCRIPCION | A | Unit | B | C | D | E | F | G | H | I | J | Unit | Weight | |
|--------------|--|-------|------|------|------|-------|------|-------|-------|------|------|------|------|--------|--------|
| | | | | | | | | | | | | | | Male | Female |
| STUCP05N122H | A15 3/4"NPT-Hembra 74 l/min 4785psi A.R.Cara Pl. | 3/4 | mm | 36 | 41 | 73 | 42 | 84 | 139,4 | 38,5 | 44,8 | 27 | Kg | 0,292 | 0,631 |
| STUCP05N122M | A15 3/4"NPT-Macho 74 l/min 4785psi A.R.Cara Pl. | | Inch | 1,42 | 1,61 | 2,87 | 1,65 | 3,31 | 5,49 | 1,52 | 1,76 | 1,06 | lb | 0,64 | 1,39 |
| STUCP05N161H | A17 1"NPT-Hembra 100 l/min 4785psi A.R. Cara Pl. | 1 | mm | 46 | 46 | 83,7 | 48 | 98,8 | 160,5 | 49,8 | 49,8 | 30 | Kg | 0,473 | 0,931 |
| STUCP05N161M | A17 1"NPT-Macho 100 l/min 4785psi A.R. Cara Pl. | | Inch | 1,81 | 1,81 | 3,30 | 1,89 | 3,89 | 6,32 | 1,96 | 1,96 | 1,18 | lb | 1,04 | 2,05 |
| STUCP05N162H | A21 1"NPT-Hembra 189l/min 4350psi A.R. Cara Pl. | 1 | mm | 55 | 55 | 96,8 | 55 | 104,8 | 178,6 | 59,8 | 59,8 | 36 | Kg | 0,900 | 1,430 |
| STUCP05N162M | A21 1"NPT-Macho 189 l/min 4350psi A.R. Cara Pl. | | Inch | 2,17 | 2,17 | 3,81 | 2,17 | 4,13 | 7,03 | 2,35 | 2,35 | 1,42 | lb | 1,98 | 3,15 |
| STUCP05N201H | A25 1 1/4"NPT-Hembra 225 l/min 4350psi A.R.Cara Pl. | 1-1/4 | mm | 55 | 55 | 105 | 65 | 125,1 | 206,8 | 59,8 | 65 | 44 | Kg | 1,105 | 2,100 |
| STUCP05N201M | A25 1 1/4"NPT-Macho 225 l/min 4350psi A.R.Cara Pl. | | Inch | 2,17 | 2,17 | 4,13 | 2,56 | 4,93 | 8,14 | 2,35 | 2,56 | 1,73 | lb | 2,44 | 4,63 |
| STUCP05N241H | A30 1 1/2"NPT-Hembra 288 l/min 3915psi A.R.Cara Pl. | 1-1/2 | mm | 65 | 65 | 111,1 | 80 | 132,4 | 214,9 | 69,8 | 82 | 57 | Kg | 1,665 | 3,140 |
| STUCP05N241M | A30 1 1/2"NPT-Macho 288 l/min 3915psi A.R.Cara Pl. | | Inch | 2,56 | 2,56 | 4,37 | 3,15 | 5,21 | 8,46 | 2,75 | 3,23 | 2,24 | lb | 3,67 | 6,92 |

La información recogida en esta ficha (Catálogo) es de carácter orientativo y puede ser modificada o no sin previo aviso. UTECSA no se hace responsable de una correcta utilización del producto, salvo las referentes a defectos de fabricación.