



Acople Cara Plana Serie APM-NPT

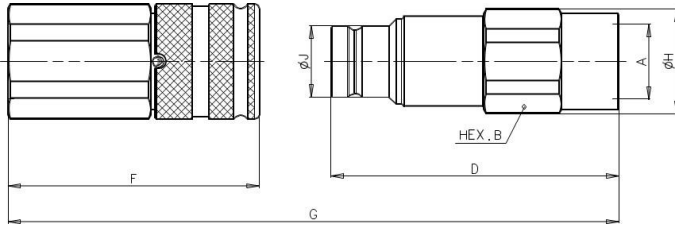
| Description | Size | ISO Size | Rated Flow | | Max. flow suggested | | Connect force ^o without pressure | | Disconnect ^o force | | Spillage * |
|-------------|-------|----------|------------|-------|---------------------|--------|---|-------|-------------------------------|-------|------------|
| | | | l/min | GPM | l/min | GPM | N | lbf | N | lbf | |
| APM9 | 3/8 | 10,0 | 23 | 6,10 | 46 | 12,19 | 165 | 37,13 | 40 | 9,00 | 0,016 |
| APM13 | 1/2 | 12,5 | 45 | 11,93 | 90 | 23,85 | 190 | 42,75 | 70 | 15,75 | 0,010 |
| APM15 | 5/8 | 16,0 | 74 | 19,61 | 148 | 39,22 | 160 | 36,00 | 50 | 11,25 | 1,200 |
| APM17 | 3/4 | 19,0 | 100 | 26,50 | 200 | 53,00 | 260 | 58,50 | 80 | 18,00 | 0,180 |
| APM21 | 1 | 25,0 | 189 | 50,09 | 378 | 100,17 | 300 | 67,50 | 90 | 20,25 | 0,180 |
| APM30 | 1-1/2 | - | 288 | 76,32 | 750 | 198,75 | 440 | 99,00 | 80 | 18,00 | 0,400 |

| Description | Max. operating pressure | | | | Burst pressure | | | | Max. residual pressure | |
|-------------|-------------------------|------|------|------|----------------|-------|------|-------|------------------------|------|
| | Coupled ° | | Male | | Coupled ° | | Male | | | |
| | MPa | psi | MPa | psi | MPa | psi | MPa | psi | MPa | psi |
| APM9 | 35 | 5075 | 35 | 5075 | 100 | 14500 | 120 | 17400 | 30 | 4350 |
| APM13 | 33 | 4785 | 33 | 4785 | 100 | 14500 | 120 | 17400 | 30 | 4350 |
| APM15 | 33 | 4785 | 33 | 4785 | 100 | 14500 | 120 | 17400 | 30 | 4350 |
| APM17 | 33 | 4785 | 33 | 4785 | 100 | 14500 | 120 | 17400 | 25 | 3625 |
| APM21 | 30 | 4350 | 30 | 4350 | 80 | 11600 | 100 | 14500 | 25 | 3625 |
| APM30 | 27 | 3915 | 27 | 3915 | 80 | 11600 | 100 | 14500 | 20 | 2900 |

La información recogida en esta ficha (Catálogo) es de carácter orientativo y puede ser modificada o no sin previo aviso. UTECSA no se hace responsable de una correcta utilización del producto, salvo las referentes a defectos de fabricación.



Acople Cara Plana Serie APM-NPT



| CODIGO | DESCRIPCION | A | Unit | B | C | D | E | F | G | H | I | J | Unit | Weight | |
|--------------|---|-----|------------|------------|--------|-------------------|--------|--------|---------------------------|--------------|--------|--------------|----------|---------------|--------|
| | | | | | | | | | | | | | | Male | Female |
| STUCP10N061M | APM9 3/8"NPT Macho 23l/min 5075psi A.R.Cara Pl. | 3/8 | mm Inch | 27 1,06 | - - | 80 3,15 | - - | - - | (F+D)-16 (F+D)-0,630 | 29 1,14 | - - | 19,7 0,78 | Kg lb | 0,210 0,46 | - - |
| STUCP10N081M | APM9 1/2"NPT Macho 23l/min 5075psi A.R.Cara Pl. | 1/2 | mm Inch | 27 1,06 | - - | 82,5 3,25 | - - | - - | (F+D)-16 (F+D)-0,630 | 29 1,14 | - - | 19,7 0,78 | Kg lb | 0,205 0,45 | - - |
| STUCP10N082M | APM13 1/2"NPT Macho 45l/min 4785psi A.R.Cara Pl. | 1/2 | mm Inch | 36 1,42 | - - | 91 3,58 | - - | - - | (F+D)-17,3 (F+D)-0,681 | 38,5 1,52 | - - | 24,5 0,96 | Kg lb | 0,430 0,95 | - - |
| STUCP10N121M | APM13 3/4"NPT Macho 45l/min 4785psi A.R.Cara Pl. | 3/4 | mm Inch | 36 1,42 | - - | 93,5 3,68 | - - | - - | (F+D)-17,3 (F+D)-0,681 | 38,5 1,52 | - - | 24,5 0,96 | Kg lb | 0,415 0,91 | - - |
| STUCP10N122M | APM15 3/4"NPT Macho 74l/min 4785psi A.R.Cara Pl. | 3/4 | mm Inch | 36 1,42 | - - | 95 3,74 | - - | - - | (F+D)-17,6 (F+D)-0,693 | 38,5 1,52 | - - | 27 1,06 | Kg lb | 0,435 0,96 | - - |
| STUCP10N161M | APM17 1"NPT-Macho 100l/min 4785psi A.R. Cara Pl. | 1 | mm Inch | 46 1,81 | - - | 108, 5 4,27 | - - | - - | (F+D)-22 (F+D)-0,866 | 49,8 1,96 | - - | 30 1,18 | Kg lb | 0,760 1,68 | - - |

La información recogida en esta ficha (Catálogo) es de carácter orientativo y puede ser modificada o no sin previo aviso. UTECSA no se hace responsable de una correcta utilización del producto, salvo las referentes a defectos de fabricación.