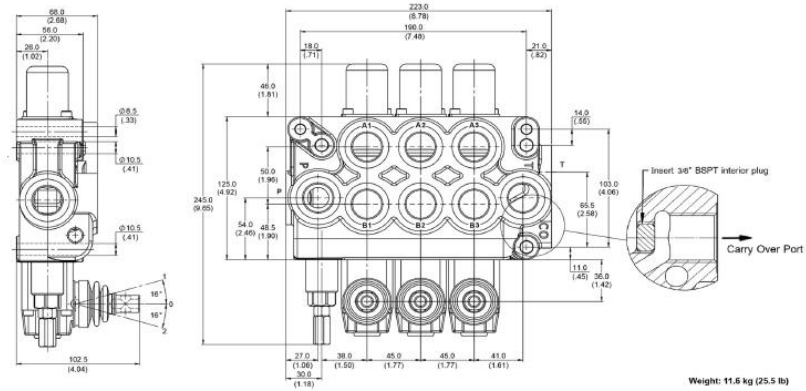




Monoblock 3Pal-3/4G 70LPM 210 BAR

MCD-50/3

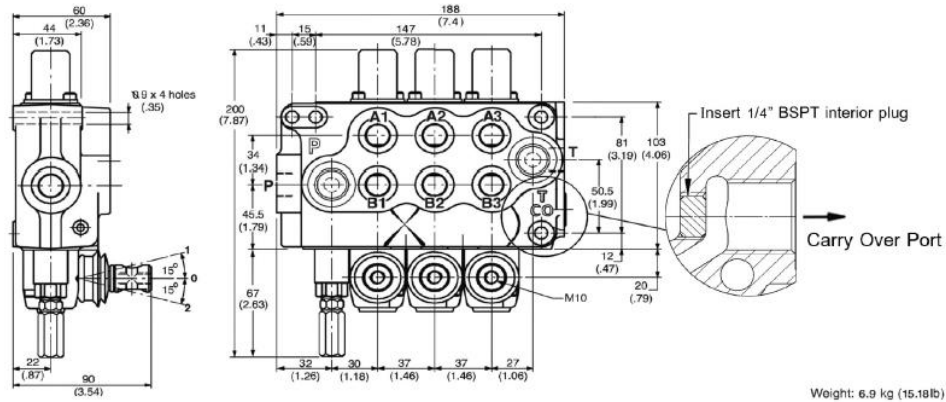


| CODIGO | DESCRIPCION | Nominal Flow L/min | Maximum Pressure bar | Number of Spool | Relief Valve Setting bar | Port Connection (A-B, P, T, CO) | Circuit Option (Outlet cover) | Optional Port Connection |
|--------------|--|--------------------|----------------------|-----------------|--------------------------|---------------------------------|-------------------------------|--|
| HOFVDMCD5005 | Monoblock-3Pal-3/4G-70L Enc/Res(MCD50/3-140/S1-B6) | 70 | 210 | 3 | 140 | 3/4" BSP | With open center plug | Use port P and T at side plugged P and T on top (standard) |

La información recogida en esta ficha (Catálogo) es de carácter orientativo y puede ser modificada o no sin previo aviso. UTECSA no se hace responsable de una correcta utilización del producto, salvo las referentes a defectos de fabricación.



Monoblock 3Pal-3/4G 70LPM 210 BAR



| CODIGO | DESCRIPCION | 1st Spool Spool Control A Port side | 1st Spool Spool Type | 2nd Spool Spool Control A Port side | 2nd Spool Spool Type | 3rd Spool Spool Control A Port side | 3rd Spool Spool Type |
|--------------|--|-------------------------------------|--|-------------------------------------|--|-------------------------------------|--|
| HOFVDMCD5005 | Monoblock-3Pal-3/4G-70L Enc/Res(MCD50/3-140/S1-B6) | Spring return to center | Double acting, 3 position with A and B closed in center (Cylinder spool) bar (psi) | Spring return to center | Double acting, 3 position with A and B closed in center (Cylinder spool) bar (psi) | Spring return to center | Double acting, 3 position with A and B closed in center (Cylinder spool) bar (psi) |

La información recogida en esta ficha (Catálogo) es de carácter orientativo y puede ser modificada o no sin previo aviso. UTECSA no se hace responsable de una correcta utilización del producto, salvo las referentes a defectos de fabricación.